

TOSHIBA

HOSPITALITY CUBE RECEIPT PRINTER

TRST-P4



FLEXIBILITY

Compact Size & Flexible Orientation



Vertical Front Exit



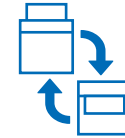
Horizontal Top Exit



355mm/s
Print Speed



Paper Near
End Sensing



Dual Desk
Orientation



Paper Jam
Sensing

Bluetooth and Wi-Fi functions will be available from June 2026 onwards.

EFFICIENCY

Jam Prevention

Automatically pauses printing immediately when a paper jam or roll end is detected.

Paper Removal Sensor

Suspends printing until the current receipt is removed, helping to prevent paper jams.

EASE OF USE

Clear LED Indicators

Instant LED alerts enable quick troubleshooting and help maintain high productivity.

Effortless Servicing

Easily replace or clean key components such as the thermal head, platen, and cutter.

DURABILITY

Print Head Life –

150KM

Cutter Life –

2 Million Cuts

Splash Resistant –

IP21

INDUSTRIES WE SERVE



Retail



Hospitality



Healthcare

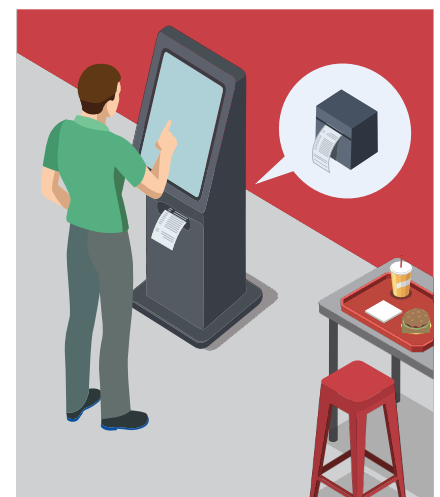
APPLICATIONS



Online Ordering &
Kitchen Printing



Counter-based POS Station



Self-service Kiosk

REMOTE MANAGEMENT SYSTEM

TOSHIBA's Printer comes with a remote management system that provides users with an efficient and comprehensive way to monitor and manage their printers online. With this system, you can access detailed printer information, download images, and perform health analyses to ensure optimal performance. It offers advanced printer configuration options, allowing for easy setup and adjustment of settings.

This system not only enhances the efficiency of printer management but also reduces downtime and maintenance costs. By providing real-time insights and remote access, our Remote Management System empowers users to maintain peak printer performance and ensures the smooth operation of printing tasks.

Key benefits of our Remote Management System include



PRINTER INFORMATION

View detailed printer status and specifications remotely.



IMAGE DOWNLOAD

Retrieve and manage print images effortlessly.



HEALTH ANALYSIS

Conduct thorough health checks to detect and address issues proactively.



PRINTER CONFIGURATION

Configure printer settings remotely, including eco settings for energy savings.



HISTORICAL LOG

Access historical logs to review past performance and troubleshoot problems.



ECO SETTINGS

Optimize printer settings for energy efficiency and cost savings.



THERMAL HEAD MONITORING

Monitor the condition of the thermal head to prevent wear and tear.



LAN SETUP

Easily set up and manage LAN configurations for seamless connectivity.



SERIAL SETUP

Configure serial connections with ease.



FIRMWARE DOWNLOAD

Keep your printers up-to-date with the latest firmware updates.

TECHNICAL SPECIFICATION

Model Name	TRST-P4
Performance	
Maximum Print Speed	355mm/sec
Print Resolution (dpi)	203 dpi
Hardware	
Interfaces USB	Type-B: USB 2.0 High Speed Printer class – Built in USB Type-A: USB High Speed - Built in (For firmware/configuration update) Ethernet (10/100BASE-T) WIFI (USB-A Dongle)
Cash Drawer Connection	RJ 12 connector up to 2 cash drawers
Power Supply	External
Power Supply Voltage	24 VDC
Power Consumption	1) Terminal Power –Low Mode (Term Pwr-Low): Maximum allowable printing power consumption is 55W 2) 60W Power Supply Mode (60W Ext Pwr): Maximum allowable printing cycle power consumption is 60W
Energy Star Certified	Yes
Thermal Print Head Life	150 km
Auto Cutter Life	2M cuts with 2.4 mil thickness media using specified paper type (NPI TF50KS-EY)
Cutter	Full and Partial cut
IP Rating	IP21
Dimensions (WxDxH)	W 127mm x H 130mm x D 127mm
Weight (Kg)	1.5 Kg
Case Color	Black
Media Handling	
Paper Width	80mm (+ 0.5mm /- 1.2mm), 58mm (+ 0.0mm / -1.0mm), 40mm (+ 0.0mm / -1.0mm)
Roll Diameter	101.6mm or less
Standard Paper Thickness Range	0.056 - 0.07mm
Paper Loading	Top Load and Front Load
Sensors	Paper Out Sensor, Paper Low Sensor, BM Sensor, Label Gap Sensor, Paper removal Sensor
Memory Allocation	
User Define Logo Area	256Kb (Flash) + 256Kb (RAM)
User Define Character Area	64Kb (Flash)
User Define Data area	64Kb (Flash)
Macro Area	2Kb (Flash)
Receive Data Buffer	64Kb (RAM)
OS, Driver, Utilities	
Supported OS	Windows 7/8/10/11, Windows server 2008/2012/2016, SUSE SLED 11 (SP3) - 32 bit, SUSE SLED 12 (32 and 64 bit), Redhat 6.6 (32bit), 7.2(64bit) and Ubuntu (Future Release - Mac, Android and iOS), Android Print, Cloud Print, HTTP Print, Web Print

Connect with your Toshiba expert to see how our Cube Printer can make all the difference in your business organization.

Toshiba Tec Singapore Pte Ltd.

2 Ang Mo Kio Street 62, Singapore 569138 Tel (65) 64819 488 www.toshibatec.com.sg

Contact us for further information about the printer



MEDIATECH MARKETING PTE LTD
 Email: mktg@mediatec.com.sg
www.mediatec.com.sg